

KEMEIDA

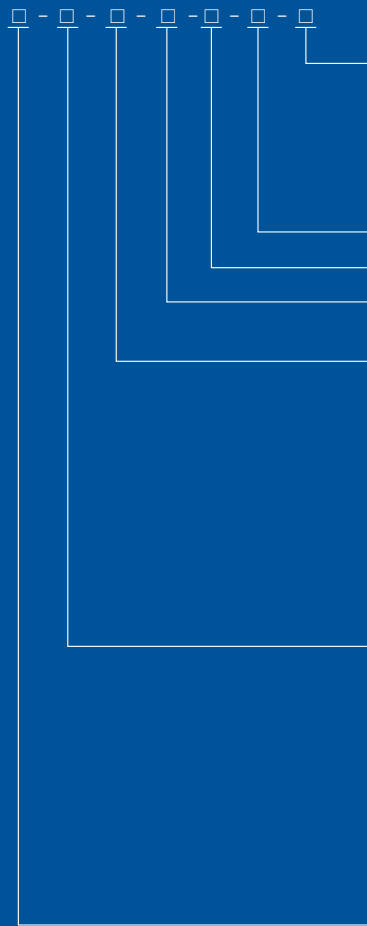
Contents 目录

企业简介	02
COMPANY PROFILE	
电缆卷筒概论	04
BRIEF ON CABLE REEL	
气体软管卷筒	07
GAS HOSE REEL	
信号（导电滑环）电缆卷筒	08
SIGNAL CABLE REEL(CONDUCTIVE SLIPRING)	
弹力式电缆卷筒	09
SPRING TYPE CABLE REEL	
滑环内装式	09
Slipring Built-in Type	
滑环外装式	12
Slipring External-installed type	
悬臂式	14
Overhanging Type	
单臂式	15
Single-arm Type	
电动式电缆卷筒	16
MOTORIZED CABLE REEL	
变频电机式电缆卷筒	16
Variable Frequency Motor Type Cable Reel	
力矩电机式电缆卷筒	17
Torque Motor Type Cable Reel	
液力偶合式电缆卷筒	19
HYDRAULIC COUPLING CABLE REEL	
磁滞式电缆卷筒	20
HYSTERESIS TYPE CABLE REEL	
长期堵转力矩电机式电缆卷筒	21
LONG TERM STALL TORQUE MOTOR TYPE CABLE REEL	
配重式电缆卷筒	23
COUNTER-WEIGHT TYPE CABLE REEL	
光纤电缆卷筒	24
OPTIC FIBER CABLE REEL	
中心集电器	24
CENTRAL COLLECTOR	
电缆卷筒零配件	25
CABLE REEL ACCESSORIES	



概论

型号说明 Model Designation



- 结构型式: Structure type**
I –滑环内装式 (通常不标注)
Slip ring built-in type (usually not marked)
II –滑环外装式 Slip ring external installed type
III –悬臂式 Overhanging installed type
IV –单臂式 Single-arm type
- 相数或软管根数 Phase number or hose number**
- 卷取线缆长度 (m) Winding length (m)**
- 容量: 电流 (A) 或软管通径 (mm) /工作压力(kg/cm²)**
Capacity: current (A) or hose reel diameter(mm)/working pressure(kg/cm²)
- 安装方式:**
A–垂直卷取 Vertical coiling
B –经换向轮垂直卷取
Vertical coiling through reversing wheel
C –水平地面卷取 (卷筒移动)
Horizontal coiling on the ground (reel movable)
D –水平地面卷取 (卷筒固定)
Horizontal coiling on the ground (reel fixed)
E –水平悬空卷取 Horizontal overhanging coiling
F –悬空卷取 Hanging coiling
- 动力形式 Power type**
B–变频电机式 Variable Frequency motor type
C–磁力耦合式 Magnetic coupling type
D–力矩电机式 Torque motor type
F–液力偶合式 Hydraulic coupling type
H–磁滞式 Hysteresis type
L–长期堵转力矩电机式 Long term locked torque motor type
T–弹簧式 Spring type
W–配重式 Counter-weight type
- 卷筒类别 Reel type**
J–电缆卷筒 Cable reel
QJ–气体软管卷筒 Gas hose reel
GJ–光纤电缆卷筒 Optical fiber cable reel

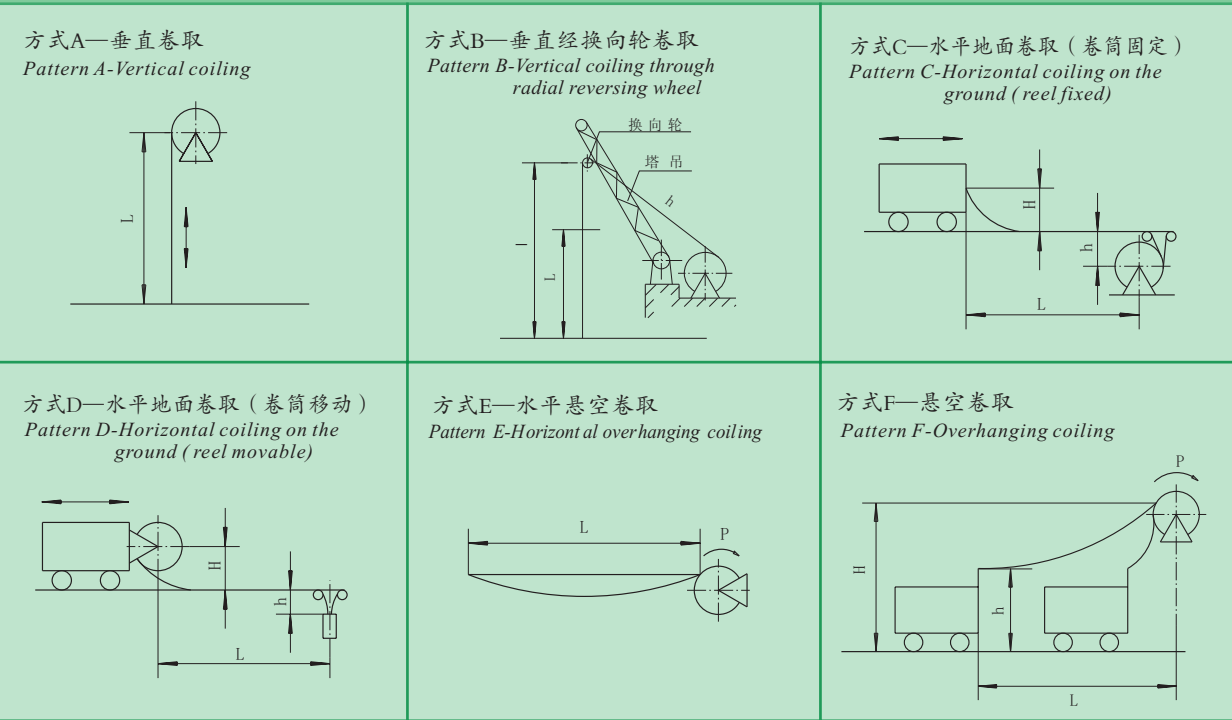
选型指南 Guide for Model Selection

1. 弹簧式电缆卷筒适用于交流500V以下卷取较小力矩的移动电气设备；
配重式电缆卷筒适用于安装空间允许的各种移动供电设备；
力矩电机式适用于卷取规格大而距离长的电力电缆和气体软管；
长期堵转力矩电机式适用于长距离供电的门吊和斗轮机；
磁滞式电缆卷筒较适用于港口起重设备卷取电缆。
2. 线缆的卷取长度以安装方式图中的L为准，配备线缆长度分别为：
(1) 方式A为L+3圈；
(2) 方式B为L+h+3圈 (其中h值在订货时必须注明)；
(3) 方式C、D中，为L+H+h+3圈；
(4) 方式E、F，根据用户现场情况确定，订货时另行注明。
3. 方式C中卷筒固定在地面，收、放线缆时，线缆与地面存在相对摩擦，此时请在线缆运行轨迹范围内铺设滚道以减少线缆的磨损。
4. 方式F中一般取H=0.1L、h=0.5H，如果H<0.14L,h<0.5H,则定货时必须注明H、h值。

5. 单梁式电动葫芦配套电缆卷筒时，应另订购滚轮支架。
6. 卷筒上线缆收、放方向在外形尺寸图中已标明。特殊要求，定货时必须注明。
7. 外形尺寸表中“质量”一栏，不包括线缆的质量。
8. 电动式卷筒结构形式以悬臂式为主 (一般不标注)。
9. 电力、信号、气体合成等特型卷筒，特殊用途产品请用户来人来函共同商议。

1. Spring cable reel is suitable for mobile electric equipments of small torque with under Ac500V.
Weight cable reel is suitable for various mobile power equipments with proper installation space allowed.
Torque motor type is suitable for coiling power cables and gas hoses of large size and long distance.
Locked torque motor cable reel is suitable for gantry crane and bucket wheel machine.
Hysteresis cable reel is suitable for coiling cables for lifting equipments at port.
2. Drum length of cable is based on L in Installation Type Drawing. The available cable lengths are:
(1) L+3 loops for pattern A;
(2) L+h+3 loops for pattern B (value h must be noted when ordering);
(3) L+H+h+3 loops for pattern C and D;
(4) Pattern E and F confirmed as per the customer's site conditions, specified separately when ordering.
3. In the Pattern C, the reel is fixed on the ground. When winding or unwinding the cable, there appears relative friction between the cable and the ground. Thus, a rollaway nest should be mounted within the cable motion area to minimize the wear-and-tear of the cable.
4. In Pattern F, generally H=0.1L, h=0.5H. If H is less than 0.14L, h is less than 0.5H, the values H and h must be specified when ordering.
5. Rolling wheel bracket should be ordered if matched with electric cable to run on single girder type electric block.
6. Cable winding and unwinding direction is marked in the overall dimension drawings. Make notes when ordering for special requirement.
7. The mass of the cable is excluded in the Mass column of the Overall Dimension Table.
8. The motor powered reel is generally of overhanging pattern in structure form (generally not marked).
9. Products of special size and special purpose can be consulted or negotiated between the customers and the producer or in written letters.

安装方式示意图 Installation pattern sketches



气体软管卷筒
Gas Hose Reel

通用橡套电缆载流量（供参考）

Current carrying capacity of general rubber-sheathed cable (for reference)

导电线芯最高工作温度+65℃ 周围环境温度+25℃
Maximum working temperature of conductive wire core: +65 °C Ambient temperature: +25°C

主线芯 截面 section of main core (Amm ²)	长期连续负荷允许载流量 (A) allowed long term continuous current carrying capacity				主线芯 截面 section of main core (mm ²)	长期连续负荷允许载流量 (A) allowed long term continuous current carrying capacity			
	CEFR (船用电缆) marine cable					YC YCW (重型橡套电缆, W为防油型) (heavy plastic-sheathed cable, W for oil resistant type)			
	二 芯 two cores	三 芯 three cores	四 芯 four cores	多 芯 multi-cores		一 芯 one core	二 芯 two cores	三 芯 three cores	四 芯 four cores
0.5	12	10	9	4	4	37	30	27	25
0.75	14	12	11	7	6	48	40	34	35
1.0	17	14	13	10	10	82	75	63	50
1.5	21	18	16	12	16	112	100	84	65
2.0	26	22	20	16	25	148	135	116	90
2.5	30	25	24	20	35	183	170	143	110
					50	223	200	154	140
					70	276	250	191	180
					95	334	300	233	210
					120	387	350	270	250
					150	445	400	350	300
不同环境温度时载流量换算的系数 Conversion factor of current carrying capacity at different environment temperatures									
环境温度 °C Ambient Temp		15	20	25	30	35	40		
换算系数 Conversion Factor		1.12	1.06	1.00	0.94	0.87	0.79		

电缆的重量及外径(供参考)

Weight and outer diameter of cable

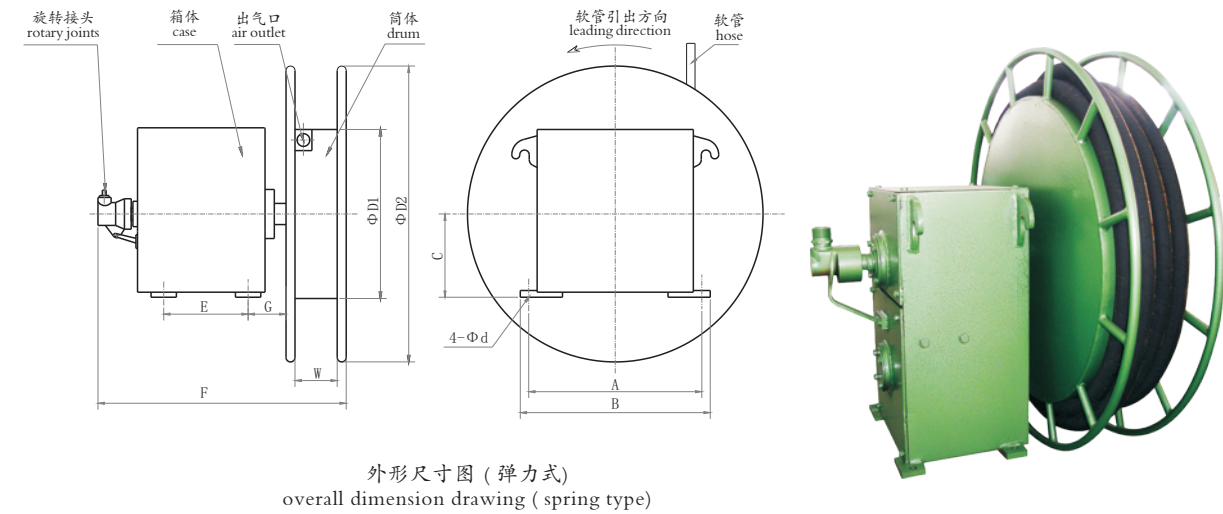
电缆型号 cable model		YC2X6	YC2X10	YC2X16	YC2X25	YC2X35	YC2X50	YC3X6+1X4	YC3X10+1X6	YC3X16+1X6	YC3X25+1X10
近似外径(mm) approximate outer diameter		18.5	24	27.5	31.5	35.5	41	21	26.5	30.5	35.5
近似重量(kg/m) approximate weight		0.41	0.67	0.91	1.14	1.61	2.46	0.60	0.93	1.25	1.82
YC3X35+1X10	YC3X50+1X16	YC3X70+1X25	YC3X95+1X35	YC3X120+1X35	YC3X150+1X50	CEFR10X2.5	CEFR14X2.5	CEFR19X2.5	CEFR24X2.5		
38.5	46	51	55	59	66	24.5	27	30	35.5		
1.98	3.24	4.50	5.55	6.36	7.89	0.55	0.70	0.93	1.22		

气体软管卷筒，采用特制的旋转接头，解决了动与不动件之间的密封问题，适用于各种气体的移动、旋转输送，使用安全可靠，结构形式以悬臂式为主，驱动方式分为弹力式和力矩电机式等多种，卷取软管数量为1~4根。

用户在订货时请提供以下参数：输送介质的种类、工作压力、软管规格、移动供气距离、安装方式及使用环境等。

Gas hose reel which adopts specially designed rotating joint has solved the sealing problem between the moving parts and the unmoving parts, It is suitable for moving and rotating transportation of all kinds of gas, featuring reliable and safe. The structure is mainly overhanging with mang driving modes like spring, torque, and etc. The number of the coiling hose from 1 to 4.

The following data should be supplied by the user when ordering: the kind of transporting medium, working pressure, hose size, the distance of air supply, Installation Mode, operating environment and etc.



外形尺寸表 (弹力式)
Overall Dimension Table (Spring Type)

尺寸 size (mm)	A	B	C	D1	D2	d	E	F	G	W	质量 mass (kg)
型号 model											
QJTF20/16-15-1-Ⅲ	410	450	200	500	800	15	200	625	90	120	260
QJTF20/16-30-1-Ⅲ	410	450	200	800	1200	15	200	720	90	120	300

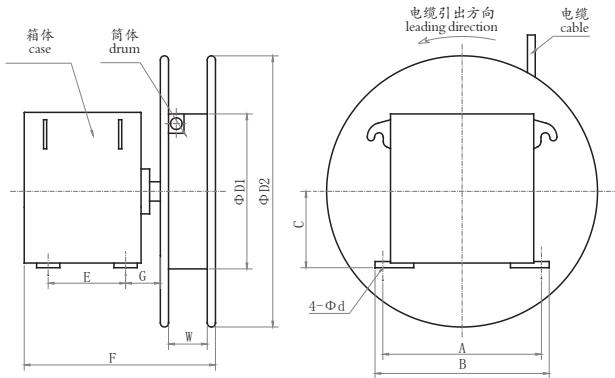
信号（导电滑环）电缆卷筒
Signal Cable Reel (Conductive Slipring)



弹力式电缆卷筒
Spring Type Cable Reel

信号电缆卷筒用于卷取和放出传递弱电信号的信号电缆，如拉压传感器的信号电缆，当检测设备移动时卷筒能灵活地跟踪检测设备卷取或放出电缆，可避免电缆不规则地堆放而拉断、压断电缆现象，以保证检测工作顺利进行。

采用精密导电滑环传递信号，适用于某些传统滑环不能胜任的领域（如高转速、低阻抗、低干扰）。产品结构紧凑、经久耐用、无需维护，常用于如下领域：计算机、仪表、量器、电视电话、测试和控制设备。



外形尺寸图 overall dimension drawing

JT系列弹力电缆卷筒是引进国际通用的发条式卷缆器技术,以蜗卷弹簧为动力,利用弹簧的储能自动卷取电缆的机械装置.具有供电简单,操作安全可靠,电缆受力适中等特点.有结构紧凑、外型美观的滑环内装式，便于维修的滑环外装式，卷取较长线缆的悬臂式和外形、体积较小的单臂式多种规格产品供用户选择。

Spring type cable reel series JT is a kind of automatic cable reel driven by the spiral spring, which adopts the imported international universal technology of spiral power spring exploiting energy by itself, featuring simple power-supply, safety and reliability in operation and correct stress on the cable. There are many kinds of products available for the customers: slip ring built-in type with compact and pretty contour; slip ring exterior installed type in convenience of service; overhanging type which can coil up much longer cables; single arm type with smaller contour and volume.

结构特点：Structure Feature

- 1、采用蜗卷弹簧为动力，自身不消耗电能，工作可靠。
 - 2、采用集电滑环—碳刷架结构传递电能，使其供电连续、平稳。
 - 3、设置了可逆转机构，避免卷筒逆转而折断弹簧。
1. Using spiral spring as drive without electric energy consumption and operation is reliable.
 2. Using collector slipring-carbon brush bracket to transfer electric energy steadily and continuously.
 3. Equipped with reversible unit to avoid reel counter-rotating to break down the spring.

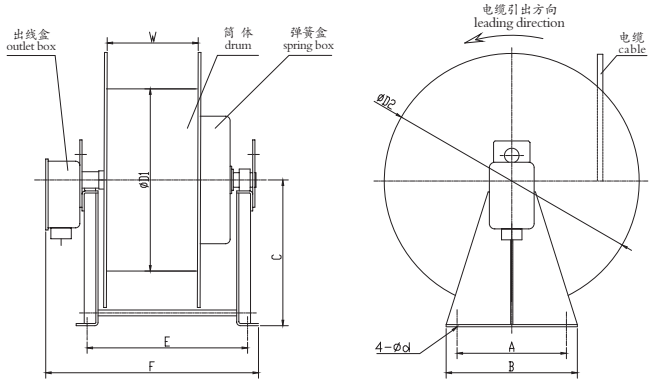
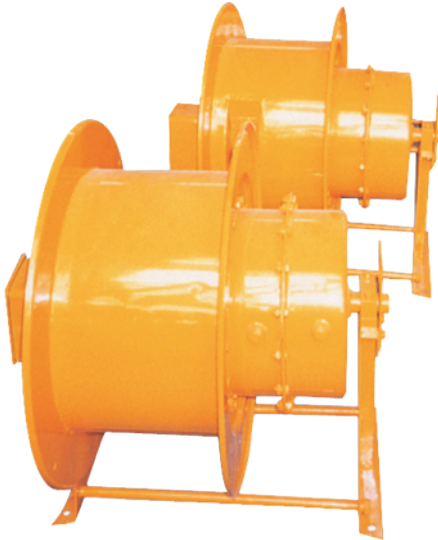
外形尺寸表(弹力式) Overall Dimension Drawing (spring type)

尺寸size (mm) 外形序号 contour item	A	B	C	D1	D2	d	E	F	G	W	质量 mass (kg)
1	410	450	200	500	800	15	150	450	90	100	160
2			200	600	900	15	150	450		100	200
3			462	600	900	18	200	550		150	260
4			462	800	1200	18	200	550		150	300

技术参数 Technical Data

电缆型号规格 芯数X截面(mm²) cable specification core number X cross section	15m系列 series 15m	外形 序号 contour item	25m系列 series 25m	外形 序号 contour item	50m系列 series 50m	外形 序号 contour item	100m系列 series 100m	外形 序号 contour item
RVVP4X1.0	JTA-15-4	1	JTA-25-4	2	JTA-50-4	3	JTA-100-4	4
RVVP6X1.0	JTA-15-6		JTA-25-6		JTA-50-6		JTA-100-4	
RVVP10X1.0					JTD-50-10	3	JTD-100-10	4
RVVP24X1.0					JTD-50-24		JTD-100-24	

滑环内装式
Slipring Built-in Type



外形尺寸图 overall dimension drawing

弹力式电缆卷筒
Spring Type Cable Reel

外形尺寸表 Overall Dimension Table

尺寸 size 外形序号 contour item		A	B	C	D1	D2	d	E	F	W	质量 mass (kg)
10m系列 series 10m	1	250	300	300	360	500	14	450	600	320	73
	2							485	650	350	78
15m、20m系列 series 15m 20m	1	300	360	400	500	700	15	440	600	250	95
	2							490	650	300	100
	3							560	720	250	115
	4							610	770	300	120
	5							720	880	300	150
25m、30m系列 series 25m 30m	1	400	460	450	600	800	18	525	675	300	120
	2							640	795		150
	3							750	905		180
	4							890	1045		210
	5	500	580	550	800	1000	18	640	795	300	180
	6							750	905		210
	7							890	1045		240

技术参数 Technical Data

电缆型号 cable model	10m系列 series 10m	外形 序号 contour item	15m系列 series 15m	外形 序号 contour item	20m系列 series 20m	外形 序号 contour item	25m系列 series 25m	外形 序号 contour item	30m系列 series 30m	外形 序号 contour item
YC2X6					JTA50-20-2 JTB50-20-2	1	JTA50-25-2 JTB50-25-2	1		
YC2X10	JTA75-10-2	1	JTA75-15-2 JTB75-15-2	1	JTA75-20-2 JTB75-20-2	1	JTA75-25-2 JTB75-25-2	2	JTA75-30-2 JTB75-30-2	6
YC2X16	JTA100-10-2	1	JTA100-15-2 JTB100-15-2	1	JTA100-20-2 JTB100-20-2	1	JTA100-25-2 JTB100-25-2	2	JTA100-30-2 JTB100-30-2	6
YC2X25			JTA135-15-2 JTB135-15-2	4	JTA135-20-2 JTB135-20-2	4	JTA135-25-2 JTB135-25-2	3	JTA135-30-2 JTB135-30-2	7
YC2X35			JTA170-15-2 JTB170-15-2	4	JTA170-20-2 JTB170-20-2	5	JTA170-25-2 JTB170-25-2	4		
YC3X6+ 1X4	JTA50-10-4	1	JTA50-15-4	2	JTA50-20-4	2	JTA50-25-4	2	JTA50-30-4	5
	JTB50-10-4		JTB50-15-4		JTB50-20-4		JTB50-25-4		JTB50-30-4	
	JTC50-10-4		JTC50-15-4		JTC50-20-4		JTC50-25-4	1	JTC50-30-4	
	JTD50-10-4		JTD50-15-4		JTD50-20-4		JTD50-25-4		JTD50-30-4	
	JTE50-10-4		JTE50-15-4				JTE50-25-4	2	JTE50-30-4	6
	JTF50-10-4		JTF50-15-4				JTF50-25-4		JTF50-30-4	
YC3X10+ 1X6			JTA65-15-4	2	JTA65-20-4	4	JTA65-25-4	2	JTA65-30-4	6
			JTB65-15-4		JTB65-20-4		JTB65-25-4		JTB65-30-4	5
			JTC65-15-4		JTC65-20-4	2	JTC65-25-4	1	JTC65-30-4	
			JTD65-15-4		JTD65-20-4		JTD65-25-4		JTD65-30-4	
			JTE65-15-4	4	JTE65-20-4	4	JTE65-25-4	3	JTE65-30-4	7
			JTF65-15-4		JTF65-20-4		JTF65-25-4		JTF65-30-4	
YC3X16+ 1X6			JTA85-15-4	4	JTA85-20-4	4	JTA85-25-4	3	JTA85-30-4	7
			JTB85-15-4		JTB85-20-4		JTB85-25-4		JTB85-30-4	
			JTC85-15-4	2	JTC85-20-4	2	JTC85-25-4	2	JTC85-30-4	5
			JTD85-15-4		JTD85-20-4		JTD85-25-4		JTD85-30-4	5
			JTE85-15-4	4	JTE85-20-4	4	JTE85-25-4	4		
			JTF85-15-4		JTF85-20-4	5	JTF85-25-4			

水平地面卷取（弹簧串联式）
Horizontal winding on the ground（spring in series type）

外形尺寸表 Overall Dimension Table

尺寸 Size 外形序号 Contour Items	A	B	C	D1	D2	d	E	F	W	质量 Mass(kg)
1	300	360	400	500	700	15	610	760	425	143
2	300	360	400	500	700	15	710	860	525	155
3	400	460	450	600	800	18	643	800	500	162
4	500	580	550	800	1000	18	835	990	690	236

技术参数 Technical Data

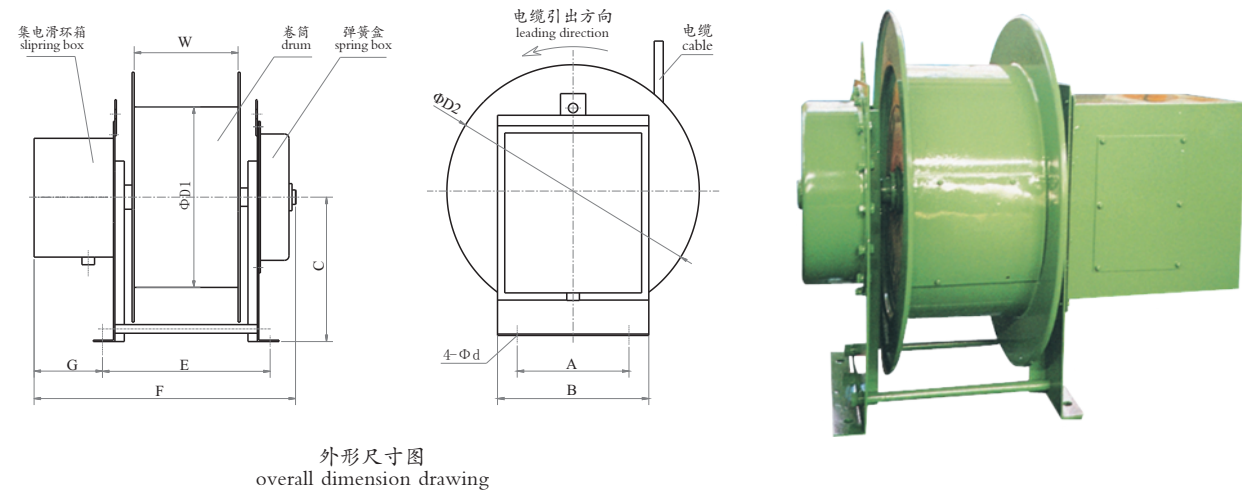
电缆型号 Cable Model	允许电流 A(40℃) Allowable Current		40m系列 Series 40m	外形序号 Contour Item	50m系列 Series 50m	外形序号 Contour Item	100m系列 Series 100m	外形序号 Contour Item
芯数 × 截面 (mm²) Core numbers x cross section	连续 Continuously	一分开一分关 1min.On; 1min.Off						
YC 3×6+1×4	35	50	JTD50-40-4	1	JTD50-50-4	3		
YC 3×10+1×6	50	65	JTD65-40-4	1	JTD65-50-4	3	JTD65-100-4	4
YC 3×16+1×6	66	85	JTD85-40-4	1	JTD85-50-4	3		
YHD 8×6	35	50	JTD50-40-8	2				

选型注意事项
Model Selection Notes

- 1、本系列卷筒仅适用于安装示意图所示安装方式D。
- 2、电缆用户自备。
1. This series reel shall only be suitable for Installation Type D shown in the sketch.
2. The cables are provided by the customers.

弹力式电缆卷筒
Spring Type Cable Reel

滑环外装式
Slipring External-installed type



外形尺寸表 Overall Dimension Table

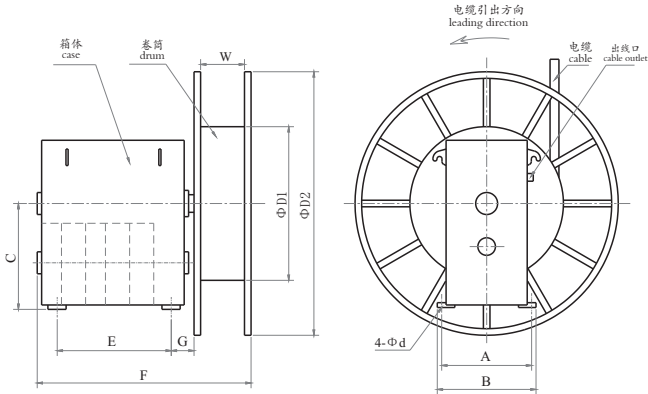
尺寸 Size (mm)		A	B	C	D1	D2	d	E	F	G	W	质量mass (kg)
外形序号 Contour items	1	310	420	400	500	700	15	420	710	190	250	140
	2							420	825	190	250	170
	3							470	990	190	300	205
	4							420	785	265	250	155
	5							420	900	265	250	185
15m、20m 系列 Series 15m 20m	1	310	420	450	600	800	18	420	710	190	250	190
	2							420	825	190	250	220
	3							470	990	190	300	250
	4							470	1105	190	300	280
	5							420	900	265	250	240
	6	310	420	550	800	1000	18	420	825	190	250	230
	7							470	990	190	300	270
	8							470	1105	190	300	300
	9							470	1220	190	300	330
	10							470	1075	265	300	280
	11							420	900	265	250	250

技术参数 Technical Data

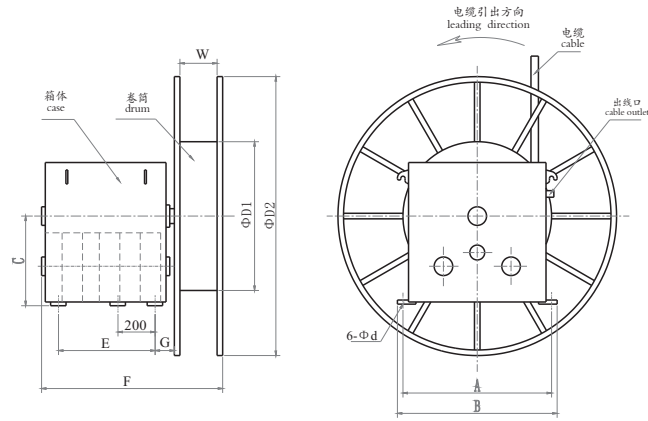
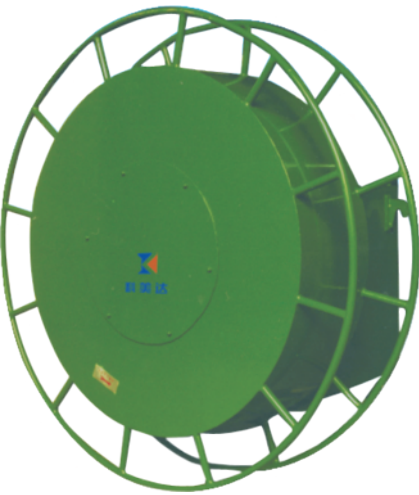
电缆型号 Cable Model	允许电流 A (40℃) Current Permitted		15m 系列 Series 15m	外形 序号 Contour Item	20m 系列 Series 20m	外形 序号 Contour Item	25m 系列 Series 25m	外形 序号 Contour Item	30m 系列 Series 30m	外形 序号 Contour Item
芯数 × 截面(mm²) Core numbers X cross section	连续 Continuously	一分开一分关 1min.on; 1min.off								
YC 2 × 6	40	50					JTA50-25-2-Ⅱ	1		
							JTB50-25-2-Ⅱ			
YC 2 × 10	58	75	JTA75-15-2-Ⅱ	1	JTA75-20-2-Ⅱ	1	JTA75-25-2-Ⅱ	2	JTA75-30-2-Ⅱ	7
			JTB75-15-2-Ⅱ		JTB75-20-2-Ⅱ		JTB75-25-2-Ⅱ		JTB75-30-2-Ⅱ	
YC 2 × 16	77	100	JTA100-15-2-Ⅱ	1	JTA100-20-2-Ⅱ	2	JTA100-25-2-Ⅱ	2	JTA100-30-2-Ⅱ	7
			JTA100-15-2-Ⅱ		JTB100-20-2-Ⅱ		JTB100-25-2-Ⅱ		JTB100-30-2-Ⅱ	
YC 2 × 25	106	135	JTA135-15-2-Ⅱ	2	JTA135-20-2-Ⅱ	2	JTA135-25-2-Ⅱ	3	JTA135-30-2-Ⅱ	9
			JTB135-15-2-Ⅱ		JTB135-20-2-Ⅱ		JTB135-25-2-Ⅱ		JTB135-30-2-Ⅱ	
YC 2 × 35	132	170	JTA170-15-2-Ⅱ	2	JTA170-20-2-Ⅱ	3	JTA170-25-2-Ⅱ	4		
			JTB170-15-2-Ⅱ		JTB170-20-2-Ⅱ		JTB170-25-2-Ⅱ			
Y C 3 × 6+1 × 4	35	50	JTA50-15-4-Ⅱ	1	JTA50-20-4-Ⅱ	1	JTA50-25-4-Ⅱ	2	JTA50-30-4-Ⅱ	6
			JTB50-15-4-Ⅱ		JTB50-20-4-Ⅱ		JTB50-25-4-Ⅱ		JTB50-30-4-Ⅱ	
			JTC50-15-4-Ⅱ		JTC50-20-4-Ⅱ		JTC50-25-4-Ⅱ	1	JTC50-30-4-Ⅱ	7
			JTD50-15-4-Ⅱ		JTD50-20-4-Ⅱ		JTD50-25-4-Ⅱ		JTD50-30-4-Ⅱ	
			JTE50-15-4-Ⅱ				JTE50-25-4-Ⅱ	2	JTE50-30-4-Ⅱ	7
			JTF50-15-4-Ⅱ				JTF50-25-4-Ⅱ		JTF50-30-4-Ⅱ	
Y C 3 × 10+1 × 6	50	65	JTA65-15-4-Ⅱ	1	JTA65-20-4-Ⅱ	2	JTA65-25-4-Ⅱ	2	JTA65-30-4-Ⅱ	7
			JTB65-15-4-Ⅱ		JTB65-20-4-Ⅱ		JTB65-25-4-Ⅱ		JTB65-30-4-Ⅱ	
			JTC65-15-4-Ⅱ		JTC65-20-4-Ⅱ	1	JTC65-25-4-Ⅱ	1	JTC65-30-4-Ⅱ	6
			JTD65-15-4-Ⅱ	2	JTD65-20-4-Ⅱ		JTD65-25-4-Ⅱ		JTD65-30-4-Ⅱ	
			JTE65-15-4-Ⅱ		JTE65-20-4-Ⅱ	2	JTE65-25-4-Ⅱ	3	JTE65-30-4-Ⅱ	8
			JTF65-15-4-Ⅱ		JTF65-20-4-Ⅱ		JTF65-25-4-Ⅱ		JTF65-30-4-Ⅱ	
Y C 3 × 16+1 × 6	66	85	JTA85-15-4-Ⅱ	2	JTA85-20-4-Ⅱ	2	JTA85-25-4-Ⅱ	3	JTA85-30-4-Ⅱ	8
			JTB85-15-4-Ⅱ		JTB85-20-4-Ⅱ		JTB85-25-4-Ⅱ		JTB85-30-4-Ⅱ	
			JTC85-15-4-Ⅱ	1	JTC85-20-4-Ⅱ	1	JTC85-25-4-Ⅱ	2	JTC85-30-4-Ⅱ	7
			JTD85-15-4-Ⅱ		JTD85-20-4-Ⅱ		JTD85-25-4-Ⅱ		JTD85-30-4-Ⅱ	
			JTE85-15-4-Ⅱ	2	JTE85-20-4-Ⅱ	2	JTE85-25-4-Ⅱ	4		
			JTF85-15-4-Ⅱ		JTF85-20-4-Ⅱ		JTF85-25-4-Ⅱ			
Y C 3 × 25+1 × 10	91	120	JTA120-15-4-Ⅱ	2	JTA120-20-4-Ⅱ	3	JTA120-25-4-Ⅱ	4		7
			JTB120-15-4-Ⅱ		JTB120-20-4-Ⅱ		JTB120-25-4-Ⅱ			
			JTC120-15-4-Ⅱ		JTC120-20-4-Ⅱ	2	JTC120-25-4-Ⅱ	2	JTC120-30-4-Ⅱ	
			JTD120-15-4-Ⅱ		JTD120-20-4-Ⅱ		JTD120-25-4-Ⅱ		JTD120-30-4-Ⅱ	
			JTE120-15-4-Ⅱ	3						
			JTF120-15-4-Ⅱ							
CRHF 10 × 2.5	12	20	JTA20-15-8-Ⅱ	4	JTA20-20-8-Ⅱ	5	JTA20-25-8-Ⅱ	5	JTA20-30-8-Ⅱ	10
			JTB20-15-8-Ⅱ		JTB20-20-8-Ⅱ		JTB20-25-8-Ⅱ		JTB20-30-8-Ⅱ	
			JTC20-15-8-Ⅱ		JTC20-20-8-Ⅱ		JTC20-25-8-Ⅱ		JTC20-30-8-Ⅱ	
			JTD20-15-8-Ⅱ		JTD20-20-8-Ⅱ		JTD20-25-8-Ⅱ		JTD20-30-8-Ⅱ	
			JTE20-15-8-Ⅱ	5	JTE20-20-8-Ⅱ					11
			JTF20-15-8-Ⅱ		JTF20-20-8-Ⅱ					

弹力式电缆卷筒
Spring Type Cable Reel

悬臂式
Overhanging Type



外形尺寸图（外形序号1、2）
Overall Dimension Drawing
(Contour Item No.1, Contour Item No.2)



外形尺寸图（外形序号3）
Overall Dimension Drawing
(Contour Item No.3)

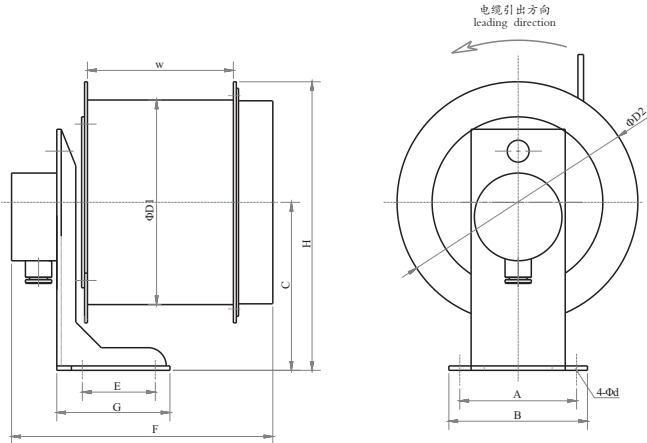
外形尺寸表 Overall Dimension Table

外形序号 contour item	尺寸 size (mm)	A	B	C	D1	D2	d	E	F	G	W	质量 mass (kg)
1		410	450	462	800	1300	18	520	1010	105	200	360
2		410	450	462	1000	1500	18	520	1060	105	250	380
3		780	820	470	800	1500	18	520	1060	105	250	500

技术参数 Technical Data

电缆型号 Cable Model	50m系列 Series 50m	外形 序号 Contour Item	60m系列 Series 60m	外形 序号 Contour Item	70m系列 Series 70m	外形 序号 Contour Item	80m系列 Series 80m	外形 序号 Contour Item	100m系列 Series 100m	外形 序号 Contour Item
芯数 × 截面 Core numbers X cross section										
YC3×25+1×10	JTC125-50-4-III JTD125-50-4-III	1	JTC125-60-4-III JTD125-60-4-III	1	JTD125-70-4-III	1	JTD125-80-4-III	1	JTD125-100-4-III	1
YC3×35+1×10	JTC150-50-4-III JTD150-50-4-III	1	JTC150-60-4-III JTD150-60-4-III	1	JTD150-70-4-III	1	JTD150-80-4-III	1	JTD150-100-4-III	3
YC3×50+1×16	JTC190-50-4-III JTD190-50-4-III	1	JTC190-60-4-III JTD190-60-4-III	1	JTD190-70-4-III	3	JTD190-80-4-III	3	JTD190-100-4-III	3
UC3×35+ 1×6+4×4	JTC150-50-8-III JTD150-50-8-III	1	JTC150-60-8-III JTD150-60-8-III	1	JTD150-60-8-III	3	JTD150-80-8-III	3	JTD150-100-8-III	3
CEFR10×2.5			JTC20-60-10-III JTD20-60-10-III	1	JTD20-70-10-III	1	JTD20-80-10-III	1	JTD20-100-10-III	1
CEFR12×2.5			JTC20-60-12-III JTD20-60-12-III	1	JTD20-70-12-III	1	JTD20-80-12-III	1	JTD20-100-12-III	1
YC 3×10+1×6							JTD65-80-4-III	2	JTD65-100-4-III	2
YC 3×16+1×6							JTD85-80-4-III	2	JTD85-100-4-III	2

单臂式
Single-arm Type



外形尺寸图 Overall Dimension Drawing



外形尺寸表 Overall Dimension Table

型 号 model	尺寸 size (mm)	A	B	C	D1	D2	d	E	F	G	W	质量 mass (kg)
JTA30-10-4-IV		160	190	230	280	350	14	100	350	155	180	30

电动式电缆卷筒

Motorized Cable Reel

电动式电缆卷筒用于卷取大规格，长距离的供电电缆，能做到与移动电器同步收放电缆。就其动力形式，可分为力矩电机式、长期堵转力矩电机式、液力偶合式、磁滞式、变频电机式。卷筒的控制回路提供接口给主控制回路，与移动电器同步自动收放电缆，并设置力矩调节装置，用于调整电缆张力，延长电缆的使用寿命。

现有卷取500V以下电力电缆和6kV，10kV高压电缆等多种电动式电缆卷筒。

Motorized cable reel which is used for large size and long distance cable, which can be in synchronous operation with the mobile electric apparatus to coil up or spool off the cable. In view of its drive modes, there are torque motor type, long term locked torque motor type, hydraulic coupling type, magnetic hysteresis type and variable frequency motor type. The control loop of the reel provides the interface to the main control loop to keep in synchronous operation with the electric apparatus to coil up or spool off the cable. Its torque adjuster is employed to adjust the cable tension and make the cable durable.

There are so many motorized cable reels available which can coil up or spool off the electric cable under 500V and high voltage cable for 6kV and 10kV.

变频电机式电缆卷筒

Variable Frequency Motor Type Cable Reel

一种变频器控制电动式，移动起重运输设备电缆的收放装置，适用于建材、港口、矿山、冶金和水利等行业的桥式吊车、塔吊及堆取料机上使用。包括有电动机、减速机、电缆卷盘、集电箱和底座，其中电机的法兰和减速机联接，电机的轴心线与集电箱、电缆卷盘与减速机输出轴的回转轴中心线垂直成90°，减速机输出轴联结电缆卷盘和集电箱，集电箱与电缆卷盘回转中心线在同一轴线上，减速机基座和集电箱一同固定在底座上，其特点是还设置有变频器和专用导向器，不仅实现了用户自己大范围调整电缆卷筒转矩的愿望，还满足了用户对3000N.m以上大转矩电缆卷筒要求，实现电缆卷筒的软启动、数字式控制，是新一代卷放电缆的理想设备。

It is a kind of transducer controlled motor type equipment to coil up and spool off the cable used for the mobile equipment, lifting equipment and transporting equipment, which is suitable to be used on the bridge crane, tower hoist and material piling and taking machine in the material industry, seaports, mining industry, metallurgical industry and water power industry. It consists of motor, decelerator, cable reel, power collecting box and base, in which the motor flange is connected with the decelerator, the motor axial lead is at right angle to the rotor center line of the output axes of the power collecting box, cable reel and decelerator. The decelerator output axes is connected to the cable reel and the power collecting box which is at the same axes with the rotor center line of cable reel, and the decelerator base is fixed on the base along with the power collecting box. Its feature is that transducer and special director are also equipped, which can meet the user's requirement to adjust the cable reel torque in a wide range by themselves as well as satisfy user's the demand for cable reel of large torque above 300N.m. This is an ideal equipment of new generation to wind and release the cable, achieving soft start and digital control to the cable reel.



力矩电机式电缆卷筒

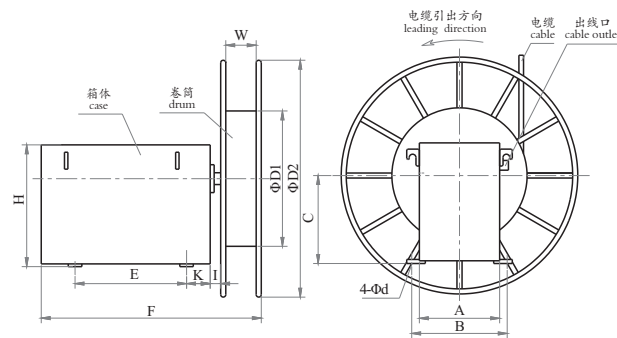
Torque Motor Type Cable Reel

力矩电机式电缆卷筒为普通力矩电机电缆卷筒，堵转时间较短。适用中等规格的电缆悬空和水平卷取。

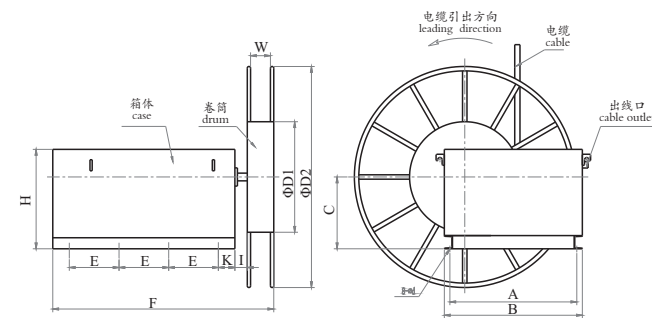
卷筒的控制回路提供接口给主回路，与移动电器同步自动收放电缆，并设置力矩调节装置，用于调整电缆张力，延长电缆的使用寿命。

This product is an ordinary moment motor cable reel with short stall time. It is suitable for overhanging and horizontally coiling mid-size cables.

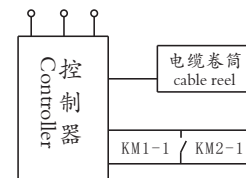
The control loop of the reel provides the interface to the main control circuit to keep in synchronous operation with the mobile electric apparatus to coil up or spool off the cable. Its moment adjuster is employed to adjust the cable tension and prolong the service life.



外形尺寸图（外形序号1~8）
Overall Dimension Drawing (Contour Item No.3 to No.8)

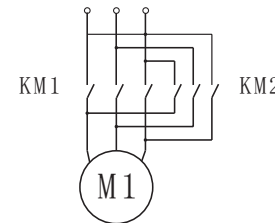


外形尺寸图（外形序号9）
Overall Dimension Drawing (Contour Item No.9)



电气连接图
Wiring diagram

- 1、M1为运行设备行走电机；
 - 2、KM1、KM2为正、反转接触器；
 - 3、KM1-1、KM2-1为常开触头；
1. M1 for traction motor of the operating equipment;
2. KM1, KM2 for positive and opposite rotating contacts;
3. KM1-1, KM2-1 for often open contacts.



用户电器部分
Wiring diagram for Customers' electric apparatus

电动式电缆卷筒
Motorized Cable Reel

外形尺寸表 Overall Dimension Table

外形序号 contour item	尺寸 size (mm)	A	B	C	D1	D2	d	E	F	H	I	K	W	质量 mass (kg)
1	575	665	520	800	1500	26	750	1450	700	80	60	180	830	
2			520	800	1600	26	750	1450	700	80	60	180	850	
3			520	800	1800	26	750	1450	700	80	60	180	880	
4			720	800	1600	26	750	1450	900	80	60	220	930	
5			720	800	1800	26	750	1450	900	80	60	220	980	
6	800	880	910	1000	1800	26	2X600	1800	1370	100	110	150	960	
7	800	880	910	1000	2000	26	2X600	1800	1370	100	110	150	980	
8	800	880	1000	1200	2500	26	2X600	1900	1460	100	110	150	1150	
9	1150	1250	650	1000	3200	20	3X450	2000	900	80	100	180	1350	

力矩电机式低压电缆卷筒技术参数
Technical data of torque motor type low voltage cable reel

电缆型号 cable model	50m系列 series 50m	外形 序号 contour item	100m系列 series 100m	外形 序号 contour item	150m系列 series 150m	外形 序号 contour item	200m系列 series 200m	外形 序号 contour item
芯数 × 截面 core number X cross section								
YC3×25+1×10			JDD90-100-4	1	JDD90-150-4	2	JDD90-200-4	3
YC3×35+1×10			JDD110-100-4		JDD110-150-4		JDD110-200-4	
YC3×50+1×16	JDD140-50-4	1	JDD140-100-4	2	JDD140-150-4	3	JDD140-200-4	3
YC3×70+1×25	JDD180-50-4		JDD180-100-4		JDD180-150-4		JDD180-200-4	
YC3×95+1×35	JDD210-50-4	4	JDD210-100-4	4	JDD210-150-4	9	JDD210-200-4	9
YC3×120+1×35	JDD250-50-4		JDD250-100-4		JDD250-150-4		JDD250-200-4	

注: 电缆用户自备
Note: The cables are provided by the users.

力矩电机式高压电缆卷筒技术参数
Technical data of torque motor type high voltage cable reel

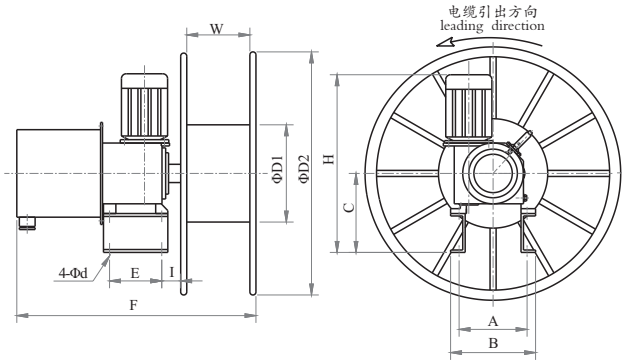
电缆型号 cable model	100m系列 series 100m	外形 序号 contour item	150m系列 series 150m	外形 序号 contour item	200m系列 series 200m	外形 序号 contour item	250m系列 series250m	外形 序号 contour item
芯数 × 截面 core number X cross section								
UG-6000 3×16+1×10	JDD90-100-4G	6	JDD65-150-4G	6	JDD65-200-4G	7	JDD65-250-4G	7
UG-6000 3×25+1×16			JDD90-150-4G	6	JDD90-200-4G	7	JDD90-250-4G	8
UG-6000 3×35+1×16	JDD110-100-4G	6	JDD110-150-4G	6	JDD110-200-4G	7	JDD110-250-4G	8
UG-10000 3×25+1×16	JDD90-100-4GG	6	JDD90-150-4GG	6	JDD90-200-4G	7	JDD90-250-4GG	8
UG-10000 3×35+1×16	JDD110-100-4GG	6	JDD110-150-4GG	6	JDD110-200-4GG	7	JDD110-250-4GG	8

注: 电缆用户自备; 如需选取用扁电缆, 订货时请注明; G表示6kV高压卷筒, GG表示10kV高压卷筒。
Note: Cables provided by the customers; if choosing flat cables, please note when ordering;
G stands for 6kV high voltage cable reel, GG stands for 10kV high voltage cable reel.

液力偶合式电缆卷筒
Hydraulic Coupling Cable Reel



JF系列液力偶合式电缆卷筒以独特的半液力偶合摩擦片式传动装置和滑环箱、卷筒三部分组成。卷取力矩调节范围大, 张力恒定; 具有良好的打滑机构, 使卷取与移动设备保持同步; 自锁性强, 当卷筒停转时, 电缆不滑落。



外形尺寸图 Overall Dimension Drawing

Hydraulic coupling type cable reel series JF is composed by three parts: unique half hydraulic coupling friction plate type gearing, slip ring box and cable reel. The coiling moment can be adjusted in a large range with stable tension; it has good skid mechanism to make the coiling in synchronous operation with the mobile equipment; with strong self-locking character, the cable won't slide down when the cable reel stops running.

外形尺寸表 Overall Dimension Table

外形序号 contour item	尺寸 size (mm)	A	B	C	D1	d	E	F	H	I	W	质量 mass (kg)
1		175	280	145	600	14	210	850	505	65	200	90
2		280	364	160	600	18	215	950	565	65	200	120
3		330	425	185	800	18	233	1050	615	65	250	230
4		445	530	200	800	18	250	1100	715	100	250	250
5		470	646	285	800	22	380	1250	940	110	250	450
6		530	730	290	1000	22	420	1400	1040	120	250	520
7		656	761	325	1000	26	525	1650	1100	160	250	890

技术参数 Technical Data

电缆型号 cable model	50m系列 series 50m	外形 序号 contour item	100m系列 series 100m	外形 序号 contour item	150m系列 series 150m	外形 序号 contour item	200m系列 series 200m	外形 序号 contour item	250m系列 series 250m	外形 序号 contour item
芯数 × 截面 core number X cross section										
YC3×10+1×6	JFD50-50-4	1	JFD50-100-4	1						
YC3×16+1×6	JFD65-50-4	1	JFD65-100-4	1						
YC3×25+1×10	JFD90-50-4	1	JFD90-100-4	2	JFD90-150-4	2	JFD90-200-4	3	JFD90-250-4	4
YC3×35+1×10	JFD110-50-4	2	JFD110-100-4	2	JFD110-150-4	3	JFD110-200-4	4	JFD110-250-4	4
YC3×50+1×16	JFD140-50-4	3	JFD140-100-4	3	JFD140-150-4	4	JFD140-200-4	4	JFD140-250-4	5
YC3×70+1×25	JFD180-50-4	4	JFD180-100-4	5	JFD180-150-4	5	JFD180-200-4	6	JFD180-250-4	6
YC3×95+1×35	JFD210-50-4	5	JFD210-100-4	5	JFD210-150-4	6	JFD210-200-4	6	JFD210-250-4	7
YC3×120+1×35	JFD250-50-4	5	JFD250-100-4	5	JFD250-150-4	6	JFD250-200-4	6	JFD250-250-4	7
YC3×150+1×50	JFD300-50-4	6	JFD300-100-4	6	JFD300-150-4	7	JFD300-200-4	7		



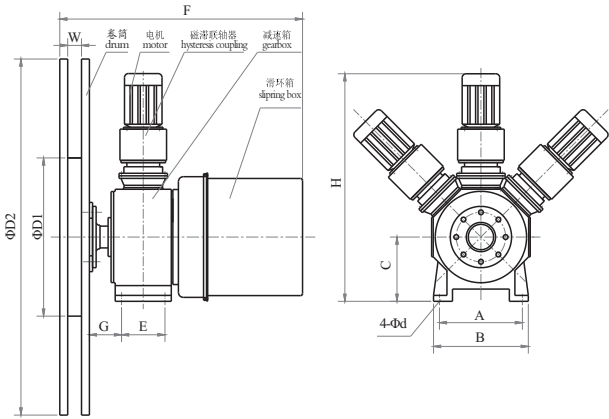
Cable Reel
电缆卷筒

电动式电缆卷筒 Motorized Cable Reel

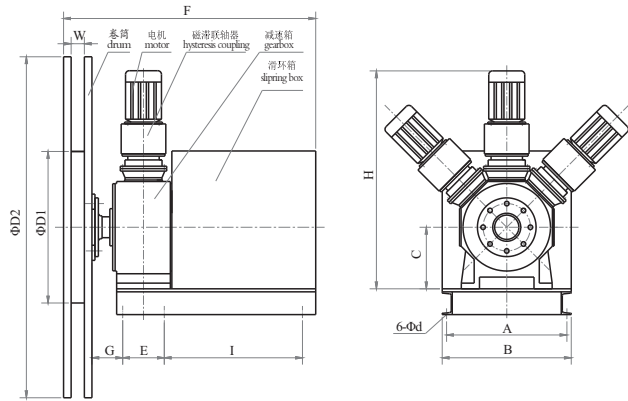
磁滯式电缆卷筒 Magnetic Hysteresis Type Cable Reel

JH系列磁滯式电缆卷筒采取动力轴与主轴正交的安装形式，使卷筒维护保养性能增强。采取非接触式永磁偶合器作为差速同步装置，使用寿命较长，卷取特性理想，能长期堵转，广泛用于港口门座起重机、集装箱起重机、装船机、塔式起重机等移动机械设备。配置一个或多个磁滯头。

Hysteresis cable reel series JH adopts installation mode of drive axis perpendicular to the main axis to improve the maintenance performance. It adopts non-contact type permanent-magnet coupling as differential speed synchronous equipment, having longer service life and ideal coiling characteristic to get long term locked. The product is widely used for the mobile mechanical equipments such as port portal crane, container crane, ship loader, tower crane and etc. It is provided with one or many magnetic hysteresis heads.



外形尺寸图(序号1~3)
Overall Dimension Drawing (Item No.1 to No.3)



外形尺寸图(序号4)
Overall Dimension Drawing (Item No.4)

外形尺寸表 Overall Dimension Table

外形序号 contour item	尺寸 size (mm)	A	B	C	D1	d	E	F	G	H	I	质量 mass (kg)
1		420	480	325	800	22	220	1100	160	1205		650
2		420	480	325	800	22	220	1200	160	1205		750
3		420	480	325	800	22	220	1250	160	1205		800
4		636	682	460	1000	22	220	1450	160	1350	730	950

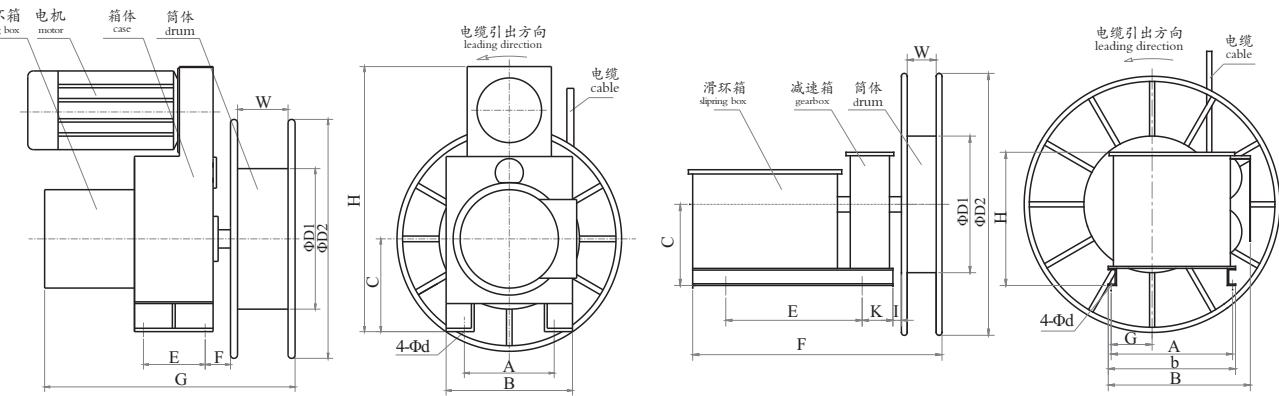
电缆型号 cable model	100m系列 series 100m	外形 序号 contour item	150m系列 series 150m	外形 序号 contour item	200m系列 series 200m	外形 序号 contour item	250m系列 series 250m	外形 序号 contour item
CEFR19X2.5	JHD20-100-19	2	JHD20-150-19	2	JHD20-200-19	2		
CEFR24X2.5	JHD20-100-24	3	JHD20-150-24	3	JHD20-200-24	3	JHD20-250-24	3
YC3 × 35+1 × 10	JHD110-100-4	1	JHD110-150-4	1	JHD110-200-4	1	JHD110-250-4	1
YC3 × 50+1 × 16	JHD140-100-4	1	JHD140-150-4	1	JHD140-200-4	1	JHD140-250-4	1
YC3 × 70+1 × 25	JHD180-100-4	1	JHD180-150-4	1	JHD180-200-4	1	JHD180-250-4	1
YC3 × 95+1 × 35	JHD210-100-4	4	JHD210-150-4	4	JHD210-200-4	4	JHD210-250-4	4
YC3 × 120+1 × 35	JHD250-100-4	4	JHD250-150-4	4	JHD250-200-4	4	JHD250-250-4	4
YC3 × 150+1 × 50	JHD300-100-4	4	JHD300-150-4	4	JHD300-200-4	4	JHD300-250-4	4

以上外形均为多排卷绕式，D2值根据电缆长度而定；单排卷取电缆时，W和D2值根据电缆的外形确定。
The contours above are mostly multi-row coiling type, and the value D2 is determined by the cable length; when coiling cable in single row, value W and D2 is determined by the cable contour.

长期堵转力矩电机式电缆卷筒 Long term locked torque motor type cable reel

JL系列长期堵转力矩电机式电缆卷筒可传递动力电源、控制电源或控制信号。采用长期堵转式力矩电机为动力，连续通电，保持收放电缆平稳可靠，减少电缆卷筒启动时对电缆的冲击。适用大规格、长距离电缆水平卷取。当单台力矩电机卷取力矩不够时，可增加到多台，以满足用户的不同距离，不同卷取方式的需求。

Long term locked torque motor type cable reel series JL can transfer power, control power or signal. It adopts long term locked torque as power to provide continuous electricity and keep the winding and unwinding stable and reliable to reduce the impact to the cable when the cable reel starts. The product is suitable for large specification and long distance cable. When the torque of single piece is not enough, more piece can be added to meet the user's requirement on distance and coiling mode.



外形尺寸图(序号1~4)
Overall Dimension Drawing (Item No.1 to No.4)

外形尺寸图(序号5~9)
Overall Dimension Drawing (Item No.5 to No.9)

电动式电缆卷筒

Motorized Cable Reel

长期堵转力矩电机式电缆卷筒

Long term stall torque motor type cable reel

外形尺寸表 Overall Dimension Table

外形序号 contour item	尺寸 size (mm)		A	B	b	C	D1	d	E	F	G	H	I	K	W	质量 mass (kg)
1			320	450		330	500	22	220	900	90	950			250	430
2			320	450		330	500	22	220	1100	90	950			180	330
3			320	450		330	600	22	220	1250	90	950			180	350
4			320	450		330	800	22	220	1350	90	950			180	380
5			760	930	810	520	800	22	3X350	1750		720	90	120	320	980
6			680	985	720	395	700	22	510	1750		720	90	120	320	980
7			712	833	746	475	950	26	544	1600		830	100	180	320	960
8			755	1185	805	525	1200	26	2X500	1700		905	100	150	320	980
9			800	1235	860	550	1200	26	2X550	1900		950	100	150	320	1150

以上外形均为多排卷绕式，D2值根据电缆长度而定；单排卷取电缆时，W和D2值根据电缆的外形确定。

The contours above are mostly multi-row coiling type, and the value D2 is determined by the cable length; when coiling cable in single row, value W and D2 is determined by the cable contour.

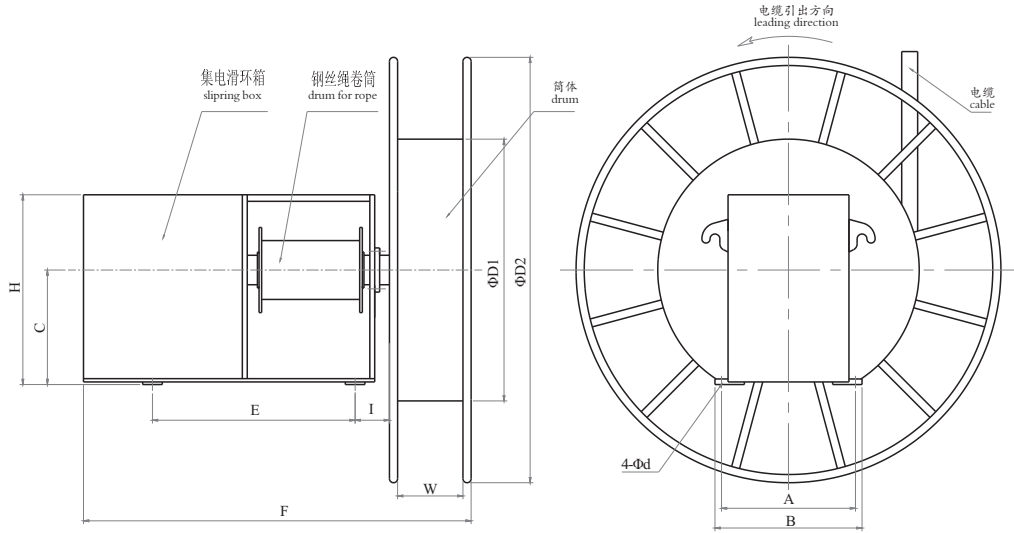
电缆型号 cable model	50m系列 series 50m	外形 序号 contour item	100m系列 series 100m	外形 序号 contour item	150m系列 series 150m	外形 序号 contour item	200m系列 series 200m	外形 序号 contour item	300m系列 series 300m	外形 序号 contour item
芯数 × 截面 core number × cross section										
CEFR19X2.5	JLA20-30-19 JLD20-50-19	2	JLD20-100-19	2	JLD20-150-19	2	JLD20-200-19	2		
CEFR24X2.5	JLA20-30-24 JLD20-50-24	3	JLD20-100-24	3	JLD20-150-24	3	JLD20-200-24	3	JLD20-300-24	3
CEFR30X2.5	JLA20-30-30 JLD20-50-30	4	JLD20-100-30	4	JLD20-150-30	43	JLD20-200-30	4	JLD20-300-30	4
CEFR37X2.5	JLA20-30-37 JLD20-50-37	5	JLD20-100-37	5	JLD20-150-37	5	JLD20-200-37	5	JLD20-300-37	5
YC3×10+1×6	JLA50-30-4 JLD50-50-4	1	JLD50-100-4	1	JLD50-150-4	1		1		1
YC3×16+1×6	JLA65-30-4 JLD65-50-4		JLD65-100-4		JLD65-150-4		JLD65-200-4		JLD65-300-4	
YC3×25+1×10	JLD90-50-4		JLD90-100-4		JLD90-150-4		JLD90-200-4		JLD90-300-4	
YC3×35+1×10	JLD110-50-4		JLD110-100-4		JLD110-150-4		JLD110-200-4		JLD110-300-4	
YC3×50+1×16	JLD140-50-4	6	JLD140-100-4	6	JLD140-150-4	6	JLD140-200-4	6	JLD140-300-4	7
YC3×70+1×25			JLD180-100-4	7	JLD180-150-4	7	JLD180-200-4	7	JLD180-300-4	7
YC3×95+1×35			JLD210-100-4	7	JLD210-150-4	7	JLD210-200-4	7	JLD210-300-4	8
YC3×120+1×35			JDD250-100-4	8	JLD250-150-4	8	JLD250-200-4	8	JLD250-300-4	9
YC3×150+1×50			JDD300-100-4	8	JLD300-150-4	8	JLD300-200-4	9	JLD300-300-4	9

配重式电缆卷筒

Counter-weight Type Cable Reel

JW系列配重式电缆卷筒是以配重块作为动力,自动卷、放电缆的机械装置，结构简单、张力恒定、同步性好、维护方便，主要用于钢厂钢包车，门吊上电缆卷取。

Counter-weight type cable reel series JW is a kind of mechanical equipment adopting counter weight as power to automatically coil up and spool off the cable, featuring simple structure, steady tension, good synchronization, convenient maintenance, which is mainly used for winding and unwinding the cable for the ladle car and gantry crane in the steel plant.



外形尺寸图
Overall Dimension Drawing

外形尺寸表 Overall Dimension Table

型号 model	尺寸 size (mm)		A	B	C	D1	D2	d	E	F	H	I	W	质量 mass (kg)
JWF125-35-23-III			410	450	350	800	1400	18	540	1320	600	105	200	260

光纤电缆卷筒
Optical Fiber Cable Reel

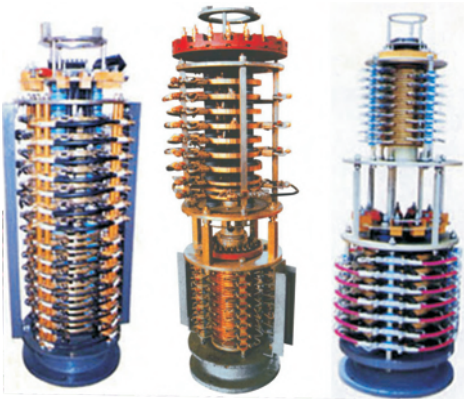
主要用于大型移动设备与地面中控之间的光纤通讯联接，光纤通信电缆卷筒与光缆之间无活动连接部分，抗干扰能力强，传输信号损失小，通信可靠。可与动力卷筒结合成动控一体卷筒。

This product is mainly used for optical fiber communication link between the large mobile equipment and the central control system on the ground. There's no active connection part between the optical fiber communication cable reel and the optic cable, having the characteristic of strong capability of resisting disturbance, low transfer signal loss and reliable communication. It can be combined with the powered reel to become drive & control integrated cable reel.

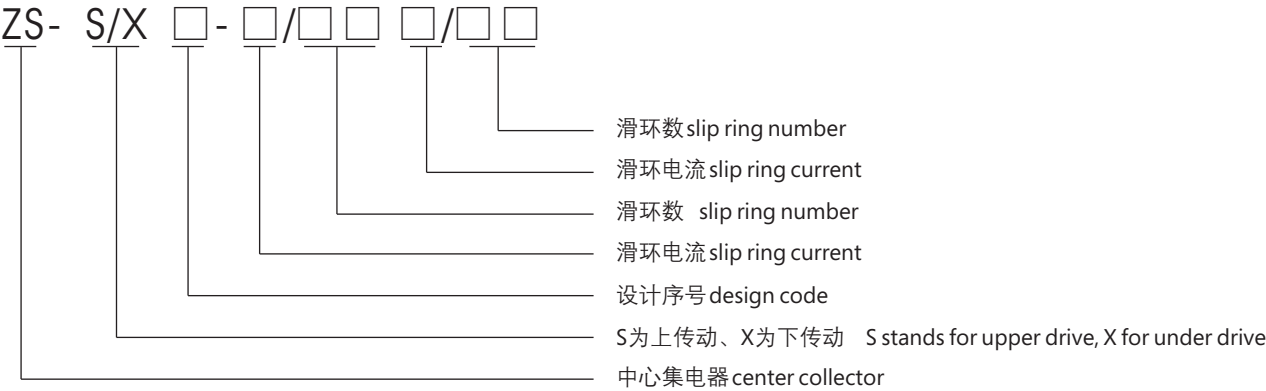
中心集电器
Central Collector

中心集电器是一种将电流从固定设备传送到转动的器件中的机电设备，主要在各类门机、固定吊、旋转台中用于相对部件作圆周运动时的动力传输和信号传递。属替代进口新一代产品，为我公司自主设计，产品可分为无外壳和有外壳2大类。有外壳保护的防护等级为IP54，下传动。无外壳的分上传动和下传动2种。

Centre collector ring is a kind of electromechanical equipment to transfer current from fixed equipment to rotating apparatus, which is mainly used for drive power transmission and signal transfer in all kinds of gantry cranes, fixed cranes, and rotating platforms when the relative part makes circle movement. The product is of new generation to replace import independently designed by our company, which can be divided into two main classes: without shell and with shell. The protection grade is IP54 for those with shell which is underdrive. Those without shell can be divided into upper-drive and underdrive.



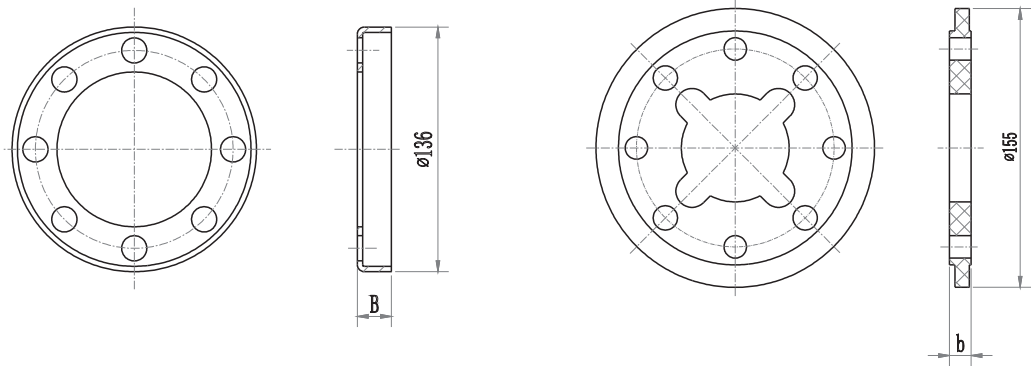
型号说明 Model Designation



滑环、绝缘环
Slipring, Insulated Ring

滑环是电缆卷筒的动件与不动件之间的衔接部分，是电缆卷筒的关键所在。绝缘环将滑环隔离，保持一定的安全距离，使滑环之间形成绝缘。

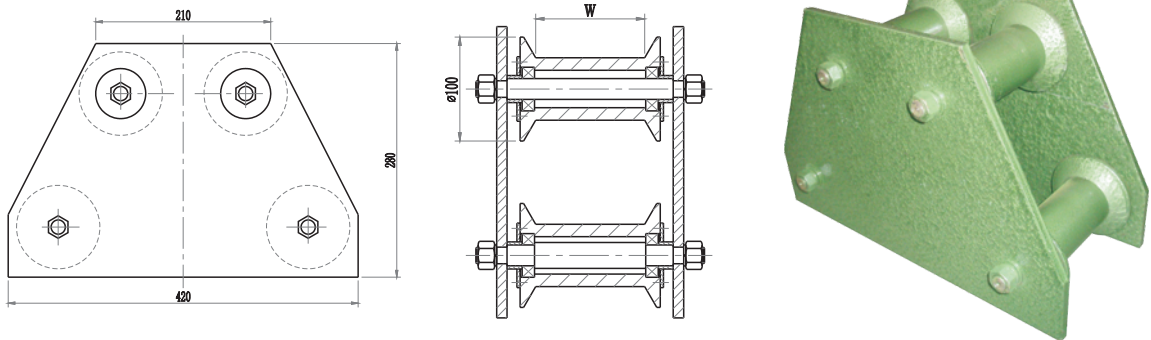
Slipring has a key function to joint active parts and inactive parts of the cable reel. The insulated ring isolates the slipring to a safe distance and produce insulation between sliprings.



导缆架
Cable Bracket

导缆架的作用，主要是使电缆卷筒放缆时,电缆能顺着电缆沟槽的方向导入,以免电缆不规则地堆放而被车轮轧坏。W值根据电缆的外形确定。

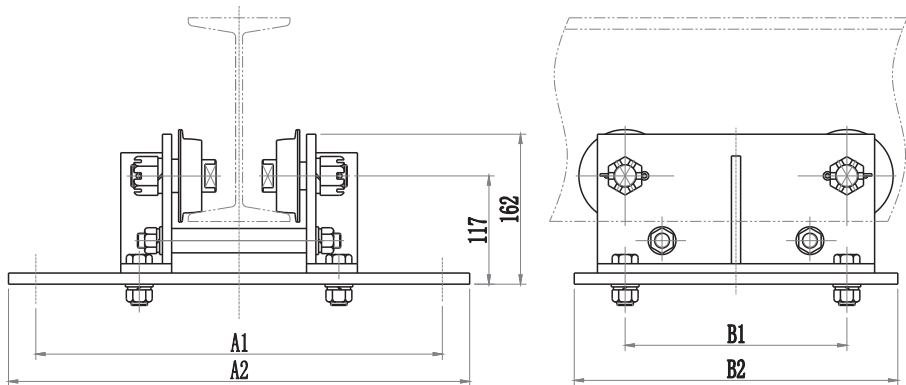
Cable bracket can guide the cable go along the cable groove direction when unwinding to prevent being rolled over by the wheel . Value W is determined by the cable shell.



滚轮支架 Roll Bracket

滚轮支架一种工字梁与电缆卷筒之间的连接机构，主要用于单梁电动葫芦配置电缆卷筒，底板的尺寸根据电缆卷筒的安装座尺寸而定。

Roll bracket which connects I-beam and cable reel is mainly used for single girder electric hoist. Its base size depends on that of cable reel.



排线器 Traverse Unit

当卷筒宽度较大时，为使电缆在卷筒上卷绕整齐，需使用排线器。卷筒输出动力，卷筒轴上装有链轮，根据电缆规格配以适当速比，通过链条与装在排线螺杆上的链轮相连接，确保电缆卷筒上电缆排列整齐、有序，特别适用于中小电缆、长行程等使用场合。自动排线器具有自动往复循环运动的性能，可与各系列电缆卷筒配套使用。

When the cable reel width is big, the traverse unit is needed to array the cable coiling in good order on the cable reel. The cable reel outputs power and the cable reel axes is equipped with chain wheel, matching appropriate speed rate according to the cable size, connecti chain wheel on thread distributing screw wer chain to guarantee an orderly array of cable. It is especially suitable to use in the cases such as medium-sized and small cables or long journey. The automatic trarerse unit can work autonatically and circularly with different serices cable cable cable reel strand ossillator has the property for , which can be used accompanying with all series of cable reel.

